

**M**edisystems OPD Patient-Call are designed to assist the busy OPD Departments of Hospitals and Clinics in handling the daily chaos of managing large numbers of OPD patients. These electronic systems help alert waiting patients about when they have to enter the examination room and which particular room no. they have been called to. They also help to streamline patient flows.

**T**hese systems comprise one or more Central Display Panels placed in the main and subsidiary waiting areas, and as many Room and Door Display combinations as are required, based on the number of consulting / examination rooms for the OPD.



## Central Display Panel

**T**he Central Display Panel is placed in the patient waiting hall. It displays the Patient/ Case/ Call No. along with the Examination Room No. to which the patient has been called. This part of the display is in bold characters and it scrolls vertically to display the list of Patient Nos. called. An audible chime accompanies the call for each new / next patient called in for examination.

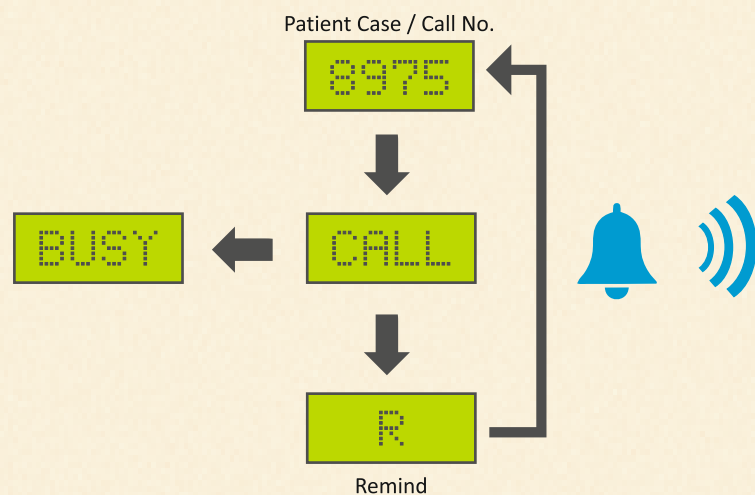
**T**he lower display is in smaller characters. It scrolls horizontally from right to left. It alternates the day/date/time display with the name of the hospital as also any messages or advisories of public importance (eg. Free health checkup camp on Sundays). Bilingual displays are also available.

Typically, an Admissions Clerk fills in a fresh case paper, with a case number for each new patient. This number, along with the case / file nos. of repeat visit patients, has only to be conveyed to the assigned Doctor or Consultant. The call is initiated directly from the examination room by the examining Doctor, or assistant. As many as 32 such rooms can be simultaneously accommodated on a single system.

For smaller sized OPD's a single line scrolling central display is available for indicating Patient Case / Call No. It scrolls continuously all Case / Call Nos. with the room number.

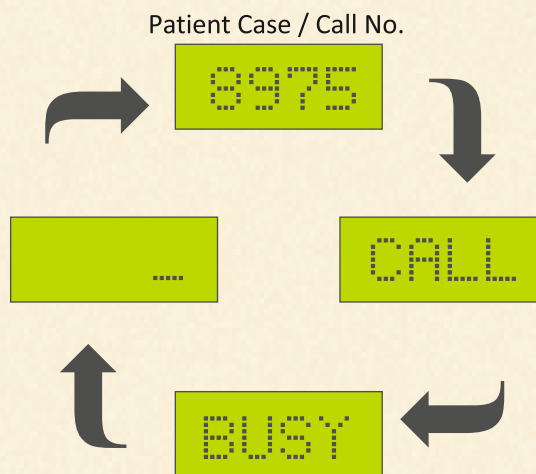
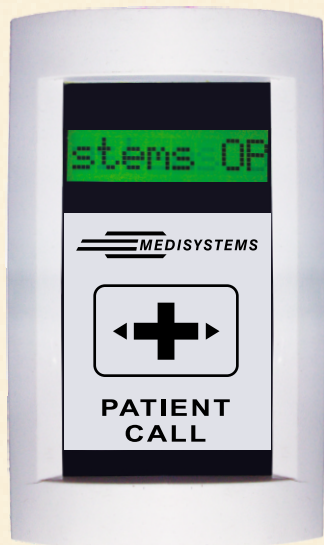


## Room Desk Unit



The Room Calling Unit module is located in the examination room on the Doctor's desk. Its numerical keypad feeds the command to enter the patient / case no. onto the central display panel in the waiting hall, while simultaneously triggering the audio chime to alert the waiting patient. It displays this no. on its own display which is updated each time the next / new patient is called into the room. After the patient has entered the room, the Doctor may also press another key to change the door display message from 'CALL' to 'BUSY'. The doctor can also enter the patient no. with Remind key 'R' to repeat unattended calls.

## Door Display Module



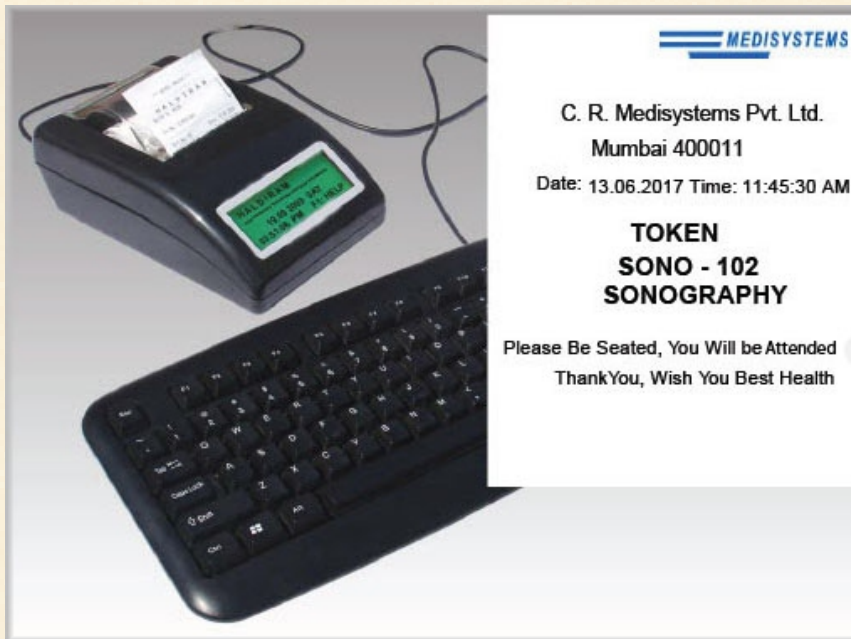
The Door Display Module is located next to the door frame at the entrance to the examination room. Its display alternates the called patient / case no. with a message saying 'CALL'. After the patient is in the room, the examining Doctor may operate the Room Unit keypad to change this message to 'BUSY' to forestall inadvertent entry by others while the patient is undergoing examination.

In addition to the examination rooms, such desktop calling units and door display units can also be placed at the counters and windows of the main Registrations / Admissions / Payments counter located in the OPD lobby. Patients can approach the admissions or payment counters after their case number has been called up on the Main Display. This helps keep the place orderly by reducing the queues at the admissions counters.

## Features

- **C**entral Display panels indicate calls accompanied with pleasing audio visual chime.
- **B**right, easily readable 4" character height LEDs on Central Display Units for visibility even in large waiting areas/ halls.
- **C**onvenient, easy-to-use keypad on desk units for entering Patient ID/token nos.
- **D**esk & Door Display units use only safe voltages. No risk of shock or electrical hazard during use.
- **D**esk & Door Units are powered over LAN. No separate AC outlets or power supply is needed for connections.
- **B**right backlit LCD display on Desk and door Display shows the calling Patient ID/token no.
- **B**right, easily readable 2" horizontally scrolling message line on Central Display panel for upto 10 programmable hospital or clinic messages.
- **O**PD Central Display Panels can be bilingual for use in different language regions.

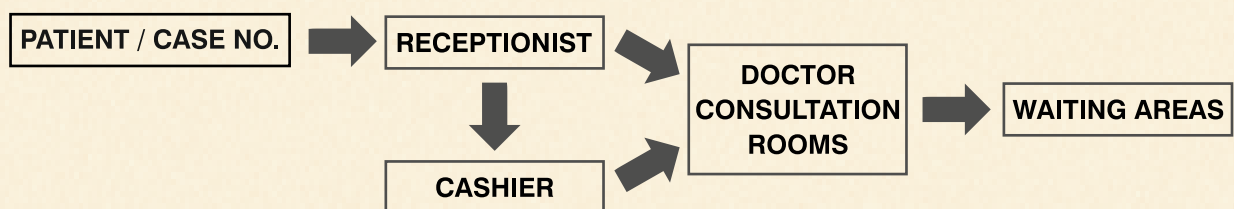
## Token Printer



**T**oken printers accompany the OPD Patient-Call Display System for issuing printed tokens to incoming patients. It can be placed on or near the reception desk for easy automatic token number issuing. Tokens are generated with easy and user friendly operation. For single or 2-3 types of queues, selection is available with a PC Keyboard. Upto 36 types of queues can be provided with PC Keyboard. Supervisor selectable header & footer messages or Q-code. Supervisor security password is issued. Token generators are powered by the data cable itself with minimal power consumption.

**S**ystem can be designed to suit a variety of hospitals, clinics or nursing homes. Token printers can auto generate dual copies of token.

**T**he Medisystems 8020 OPD Patient-Call System is a fully de-centralised system. It requires no central operator. A single power unit, located conveniently near the receptionist's desk, carries the master switch for the whole system. Peons, Reception staff or Nursing Assistants need not be employed merely for the task of calling in patients. This is a modern queue management system based on very rugged and reliable digital technologies.



**M**edisystems configures OPD Patient Call Systems based upon the OPD area requirements. This includes the no. of consultation rooms, the no. of waiting areas and whether or not the OPD receptionist or the cashier would like to be connected. We undertake turnkey installations once the wiring is completed as per specifications.

**M**edisystems Hospital Solutions also include **Bed-Head Panels both, standard and customised, Patient-Bed Lamps, ICU Pendants, OT Pendants, Control Panels, Nurse-Call Systems and OPD Queue Management Systems.**

### CR MEDISYSTEMS PVT. LTD.

335 Pragati Estate, N.M. Joshi Marg, Lower Parel, Mumbai – 400011, INDIA. Tel: 2300 4930, 23094416  
Fax: 91-22-2306 1903 • E-mail : medisystems2@gmail.com • Website : www.medisystems.in